

- -

- -

- -

:

.

-

:

.

.)

(

.

(- .) :

.

...

:

--

/

. (.)

-() . . - .(-)

:

(A1)

-

/

Ba, Bi, Sb, Au

Zn, Pb, As, Ag

(A2)

-

/

W, Sb, Pb

:

Zn, As, Au



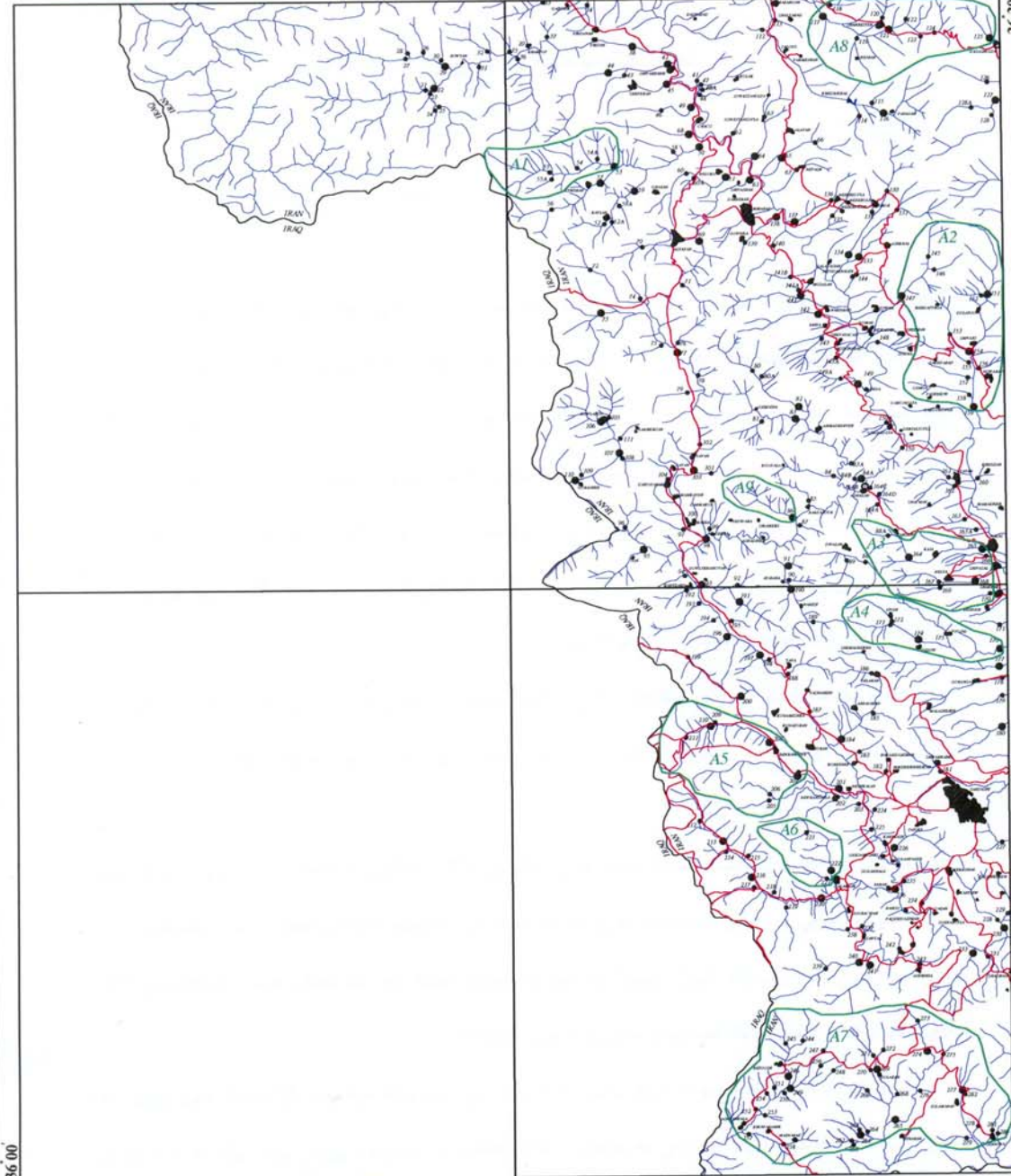
ZOWYAN

SARDASHT

MIRABAD

45° 30'

36° 30'



36° 00'
45° 00'

SARDASHT

LOCATOR MAP

LEGEND

- Drainage
- Geochemical Sample
- Microchemical Sample
- Road
- Village or City
- Sample Number
- Target Area

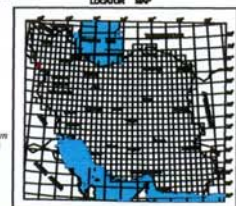
MINISTRY OF INDUSTRIES & MINES
GEOLOGICAL SURVEY AND MINERAL
EXPLORATION OF IRAN
Geochemical Exploration Department

Target areas Map

by : A.Aharpour , A.S.Sareidi , N.Gholami
Date: Oct. 2004 | Map No. 30



Coordinate System UTM (Hayford 1909)



(- .)

: -

(A3)

-

/

Sn, Cu, Au

As, Bi

(A4)

-

/

:

Sr, Cu, Ag

(A5)

-

/

Pb

Sn, Mo, Au

(A6)

-

/

Be, Sn, Zn, Pb

Bi, Mo, Cu

(A7)

-

/

Sn, Ag,

Cr, Co, Ni

Au

(A8)

-

/

:

Au

Mo Ti,

(A9)

-

/

S-86

:

- -

.()

:

:(A1)

-

/)

)

(

(K^{sh})

(Mb

:(A2)

-

)

(/

(K^{sh}) (K^{cl})

(K^v)

(-)

(-)

82-Sar.2a 82-Sar.1

: ()

- 82-Sar.1

(K^v)

-

-

N40W

ICP

- 82-Sar.1

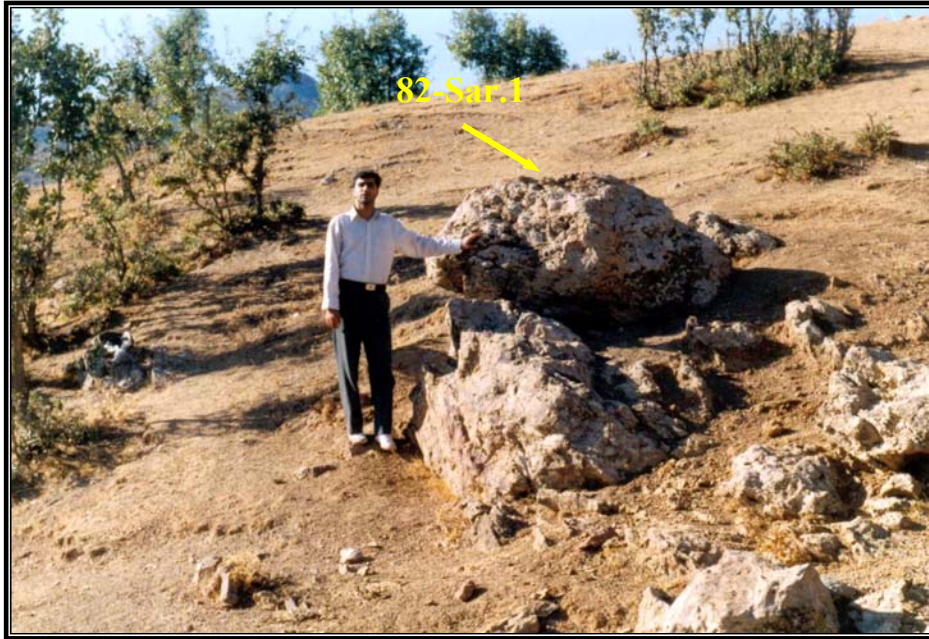
-)

82-Sar.2a

(

(-)

()



. () - : -

(-)

- (XRD)

.()

:(A3)

-

/

(K^v)

(K^{ph})

(Mo.Ga)

:(A4)

-

(/)

(K^v)

(K^{ph})

(Mb)

:(A5)

-

(/)

(Mb)

(Mo.Ga)

(Hf)

(K ph)

:(A6)

-

(/)

(Mb)

(An^{sch})

(K ph)

:(A7)

-

(/)

(Ub)

(O.M)

) (PE sch)

(

82-Sar.5

(-)

.()

)

(82-Sar.6-9)

(

: .()

-

- 82-Sar.6



: -

.(

- 82-Sar.7

۴.

>

- 82-Sar.8

>

- 82-Sar.9

ICP

(82-Sar.6-9)

.()

A7

:(A8)

-

(/)

. (Ga) (A.sy) (Mo) (Mo.Ga)

:(A9)

-

(/)

(Mb)

(K ph)

:

- -

(Mb)

.(- -)

(82-Sar.10, 11, 12a, 12b,12c, 13)

ICP

82-Sar.13

/ 82-Sar.13 .()

.()

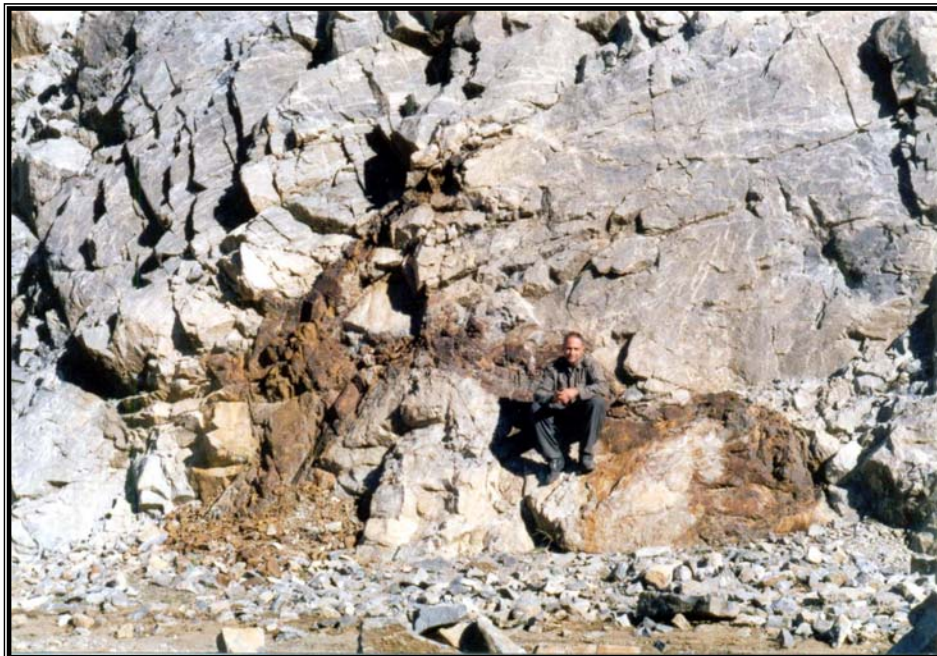
82-Sar.13 82-Sar.12

82-Sar.12 .()



(-) : -

82-Sar.12



.. : -

82-Sar.11

82-Sar.13

. 82-Sar.12